

# Customer-specific radial ball bearing from **SIMIG**®

1 row      2 rows      3 rows      4 rows

for  
 Contact person:  
 Customer:  
 Phone:  
 E-mail:  
 Quantity:    /    /    /    /

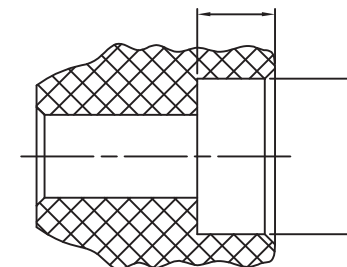
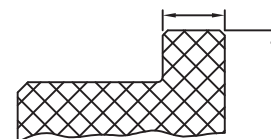
## Possible options

Outer ring

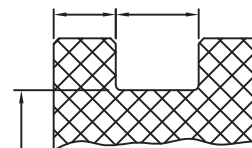
Inner ring

ball bearing with flange

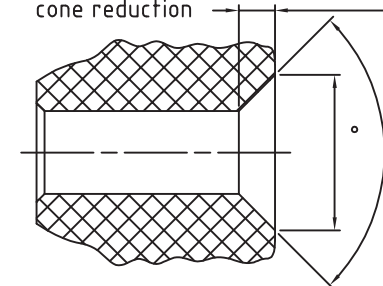
ball bearing with counterbore



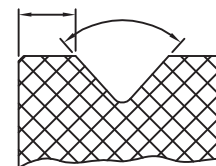
ball bearing with puncture



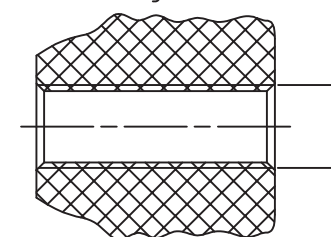
ball bearing with cone reduction



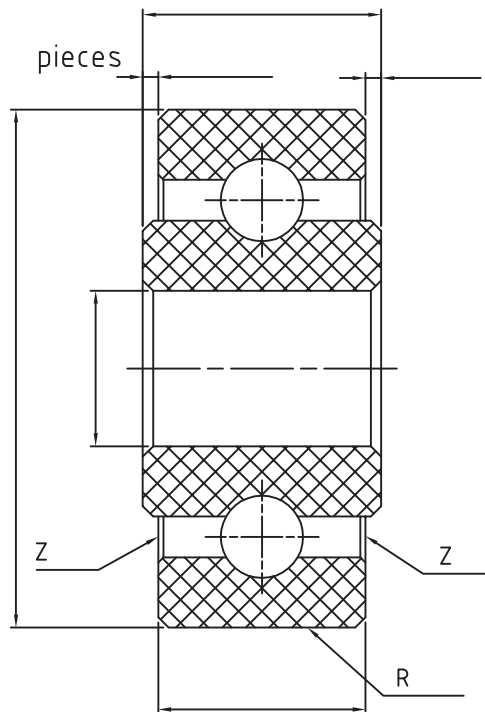
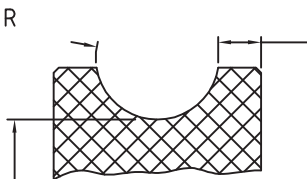
ball bearing with V-puncture



ball bearing with thread



ball bearing with radii puncture



Conditions at the depository

Speed:            r.p.m

Capacity axial stat:            N

Capacity axial dyn:            N

Operation temperature:            °C

Conductibility or insulation resp.:    yes    Atex    no

Weatherability:    yes    no

Food conformity:    yes    no

Radiation exposure/resistance:            kGy

Chemical additives :

Material selection

Rings:

Cage:

Balls:



Schmeing GmbH & Co. KG

46348 Raesfeld-Tel.02865/909300